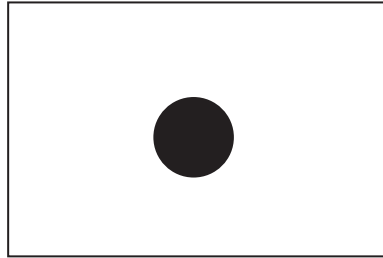


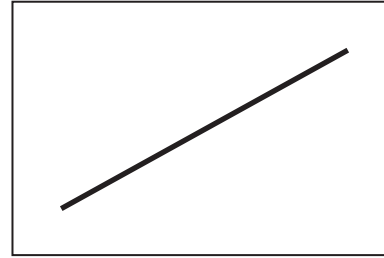
# ELEMENTS OF DESIGN

The elements of design are the singular pieces used to construct the larger compositions.

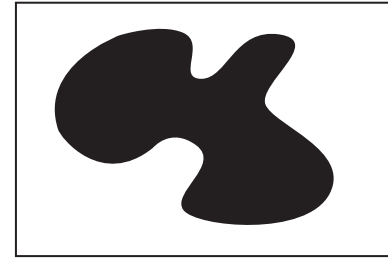
Think of them as letters in words — they are the fundamental building blocks of the language of visual communication.



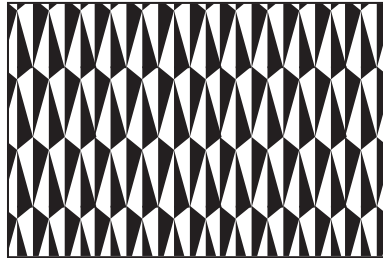
**DOT:** A point, a location in space, a circle.



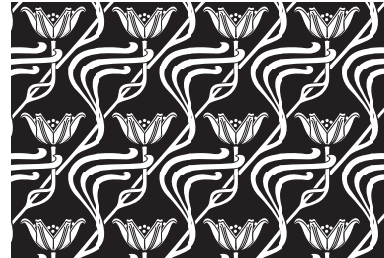
**LINE:** A path of a moving dot made by a tool.



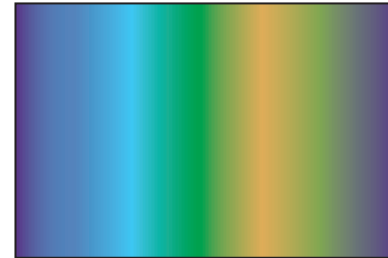
**SHAPE:** An area that stands out from the space around or next to it.



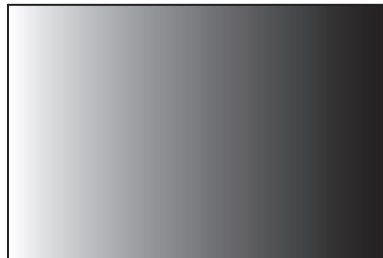
**TEXTURE:** Surface area of material. Texture can be either visual or tactile.



**PATTERN:** Repetitive motif; design elements appear over and over.



**COLOUR:** Visual spectral response to sunlight.



**VALUE/TONE:** Degree of relative lightness to darkness.